

Wireless Infrared Scouting Camera UM595-2G Instruction Manual



(For UM595-2G Model)

Content

1	General Description	1
2	Camera Overview	2
3	Installing Batteries	4
4	Purchasing your SIM card	5
5	Installing your SIM card and SD card	5
6	Customizing camera settings	6
6.1	Formatting the SD card	6
6.2	Download GSMSETUP	7
6.3	Setting up the wireless network	11
6.4	Send a test photo	12
6.5	View or Delete photos on the color display	13
7	Introduction of the Menu bar	13
7.1	Understanding main screen info	13
7.2	Customizing the camera settings	14
7.3	Defaults settings:	17
8	Setup camera using APP via Bluetooth	18
9	Synchronization	20
10	Control Camera by APP via SMS	21
11	View or Delete photos on the color display	25
12	Trouble Shooting	25
13	Tricks and tips on field setup	26
	Appendix I : Technical Specifications	27
	Appendix II : Parts List	28

1 General Description

Congratulations on your purchase of UM595-2G scouting camera. UM595-2G is a powerful and reliable performance wireless camera.

Features:

12MP invisible IR GSM camera;

0.65s trigger speed;

MMS and Email function, transmit Photo to phone or email;

Remote control function: SMS or CamCtrl_M APP;

Bluetooth function:camera settings can be done via bluetooth;

GPS and camera rename;

SD card over write to ensure cycle use;

No glow black LEDs with 12m (50ft) range;

Water resistant.

2 Camera Overview

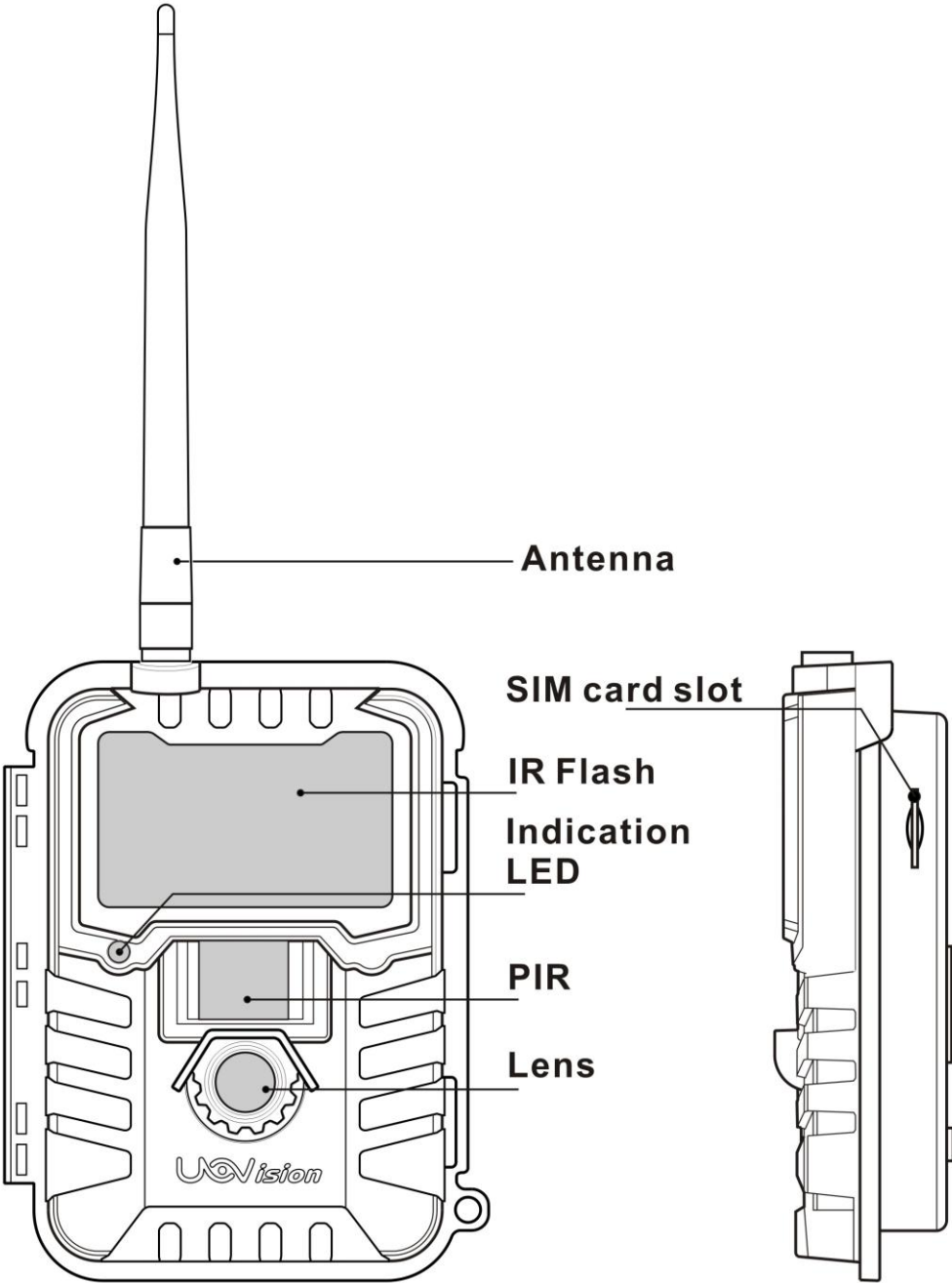


Fig 1 Front View

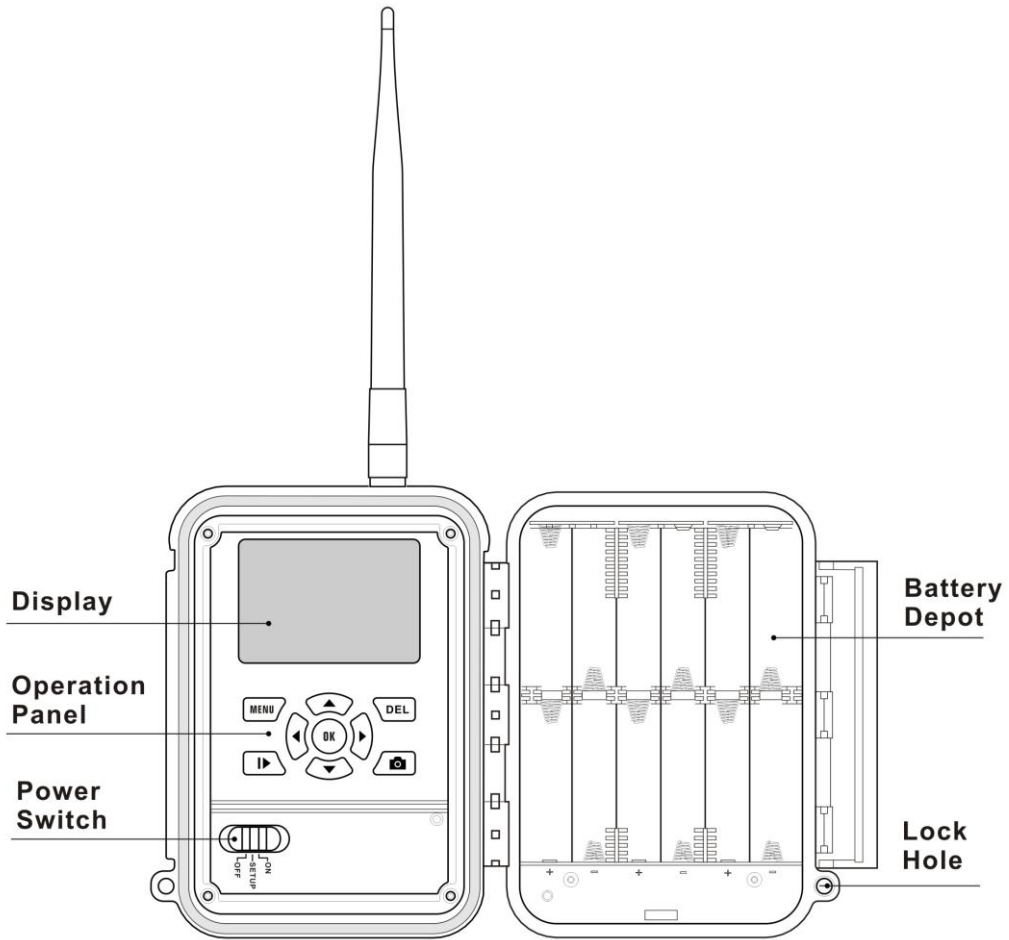


Fig 2 :Operation Interface

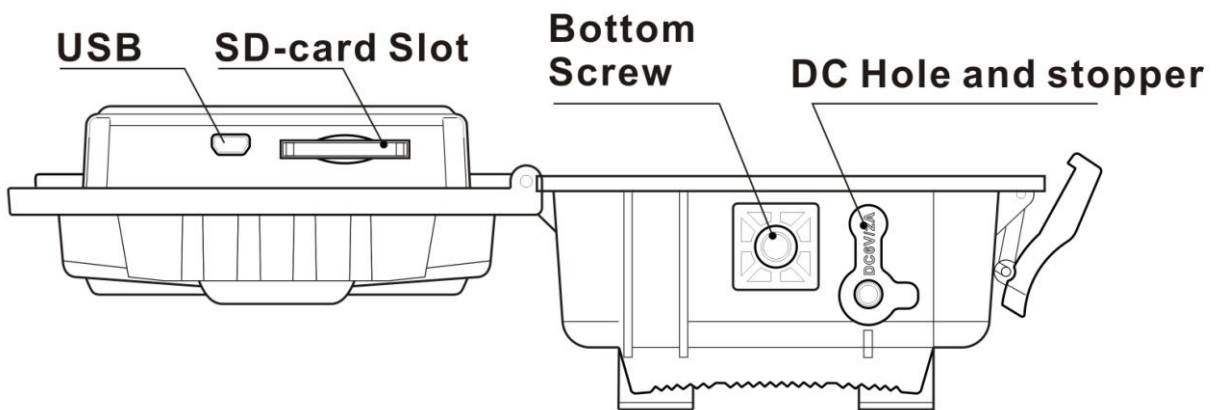


Fig 3 :Bottom View

Operation Panel:

MENU: To enter the menu, the **power switch** should be on **SETUP**.

▲▼◀▶: Navigation arrows. (“▲” is the shortcut to choose “**Video**”, while “▼” for “**Photo**”.)

OK: Save parameter settings.

▶: Exchange between playback and preview.

DEL: Delete Image.

📷: To capture a photo or record a video manually. (Click 📷 again to stop the video.)

Power Switch: OFF: turn off the power; **SETUP**: change camera settings; **ON**: enter working mode.

3 Installing the batteries

To supply power for the camera, 4, 8 or 12 size AA batteries are needed.

Confirm that the power switch is at **OFF** position; load fully charged batteries into the depot according the polarities signs shown below. The following batteries with 1.5V output can be used:

1. High-density and high-performance alkaline batteries (Recommended)
2. Rechargeable alkaline batteries
3. Rechargeable NiMH batteries

There are 6 battery slots. Slot1 and Slot2 form one group and is marked as “1”, slot3 and slot4 form the other group and is marked as “2”, while slot 5 and slot6 form the third group and is marked as “3”. Single “group” of batteries is needed to supply power to the camera, but two groups together can support camera for a longer life.

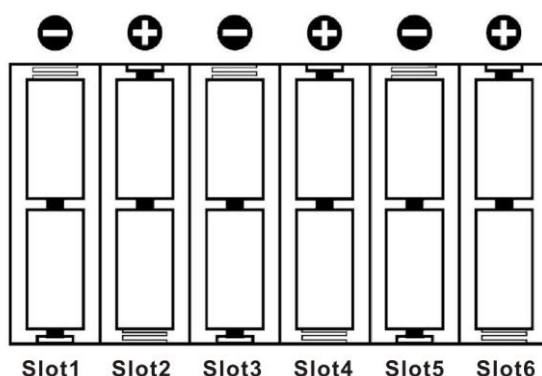


Fig 4

4 Purchasing your SIM card

UM595-2G camera is designed by using 2G cellular network send photos to any phone or email address instantly once the photo is taken.

Be sure that **the PIN Code of your SIM card is disabled** before inserting the SIM card. (You can disable the PIN of a SIM card via your mobile phone. Then reinsert the card into your camera)

5 Installing your SIM card and SD card

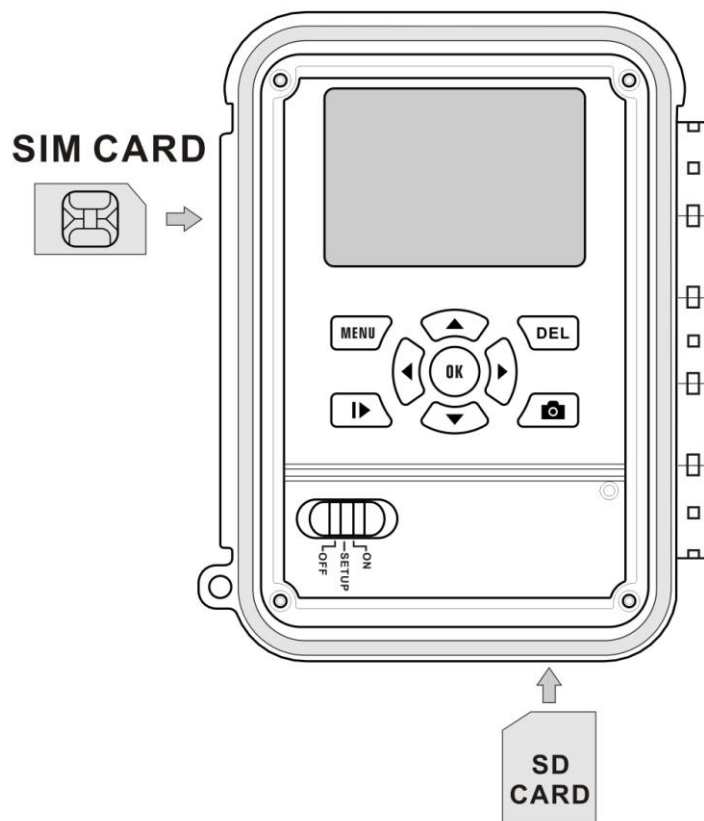


Fig 5 install SIM card and SD card

Make sure the power switch is at OFF position. You can use any SD card size up to 32G. The camera will not turn on without a SD card inside.

NOTE: Every photo taken with this camera will be saved to SD card even those being sent out to recipients. You will always have access to the high resolution photos on your SD card.

6 Customizing camera settings

6.1 Formatting the SD card

Press the **MENU** button. You will see the screen shown below:

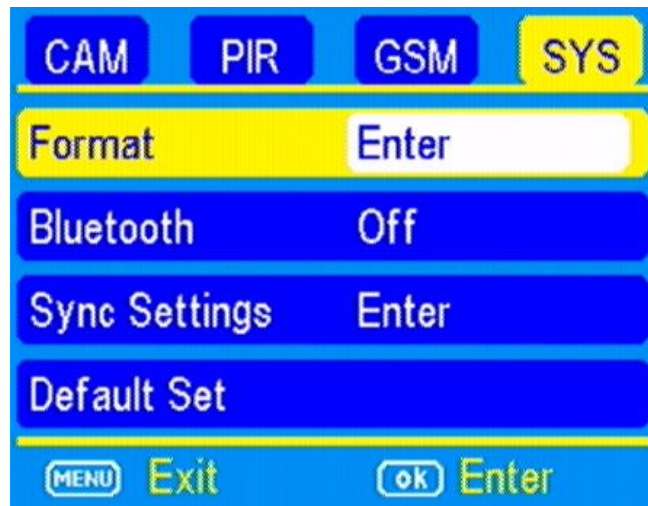


Fig 6

Select the **SYS** tab. Navigate down by pressing the ▼ button until the **FORMAT** option is highlighted and press **OK** then choose Yes to format.

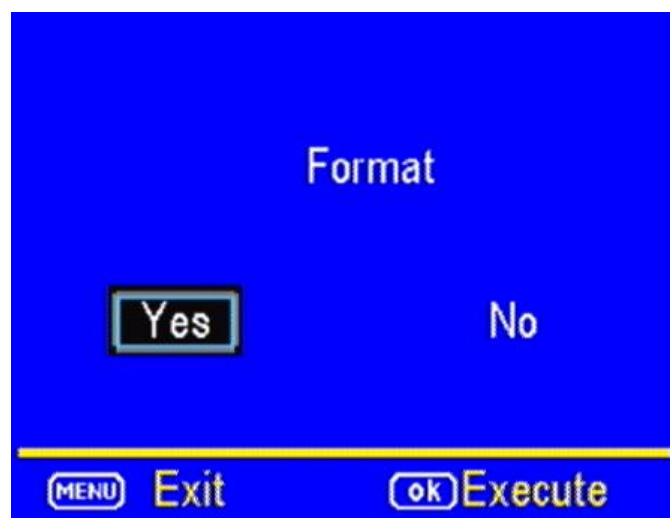


Fig 7

6.2 Download GSMSETUP

- 1) Select the **GSM** tab and navigate down to the **DOWNLOAD TOOL** and press **OK**.
- 2) Turn the camera off .
- 3) Remove the SD card from your camera and insert into your personal PC card reader.
- 4) Locate the SD card reader in your computer.

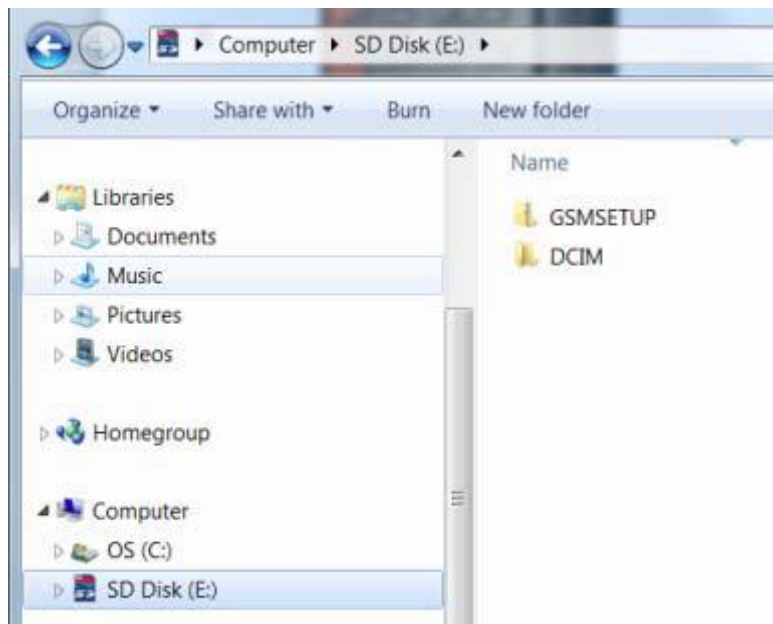


Fig 8

- 5) Unzip the **GSMSETUP** file to get the **UOV Setup application**.
- 6) You may see a warning box like below. Choose **YES** to continue.

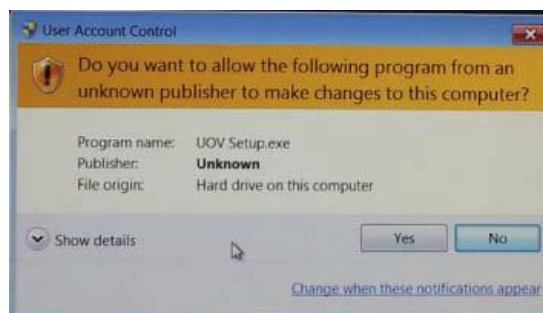


Fig 9

7) You will see the following screen for setting up the **GSM** options for your camera. This is where to add phone numbers and e-mail addresses and for other programming.

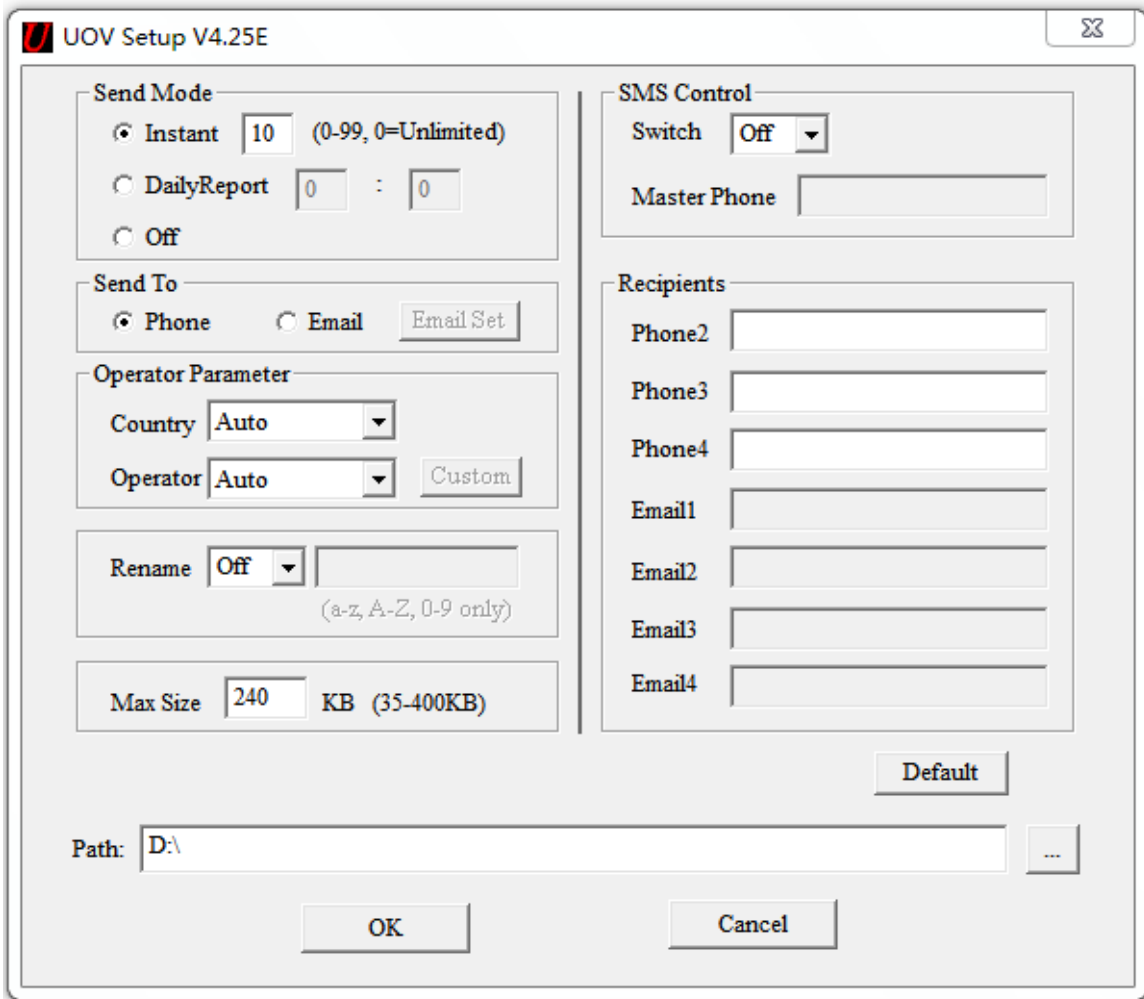


Fig 10

8) Send Mode:

a. INSTANT: If you want the camera to send every photo instantly, you need to choose this option. You can control the numbers of photos that are sent to your device or email every day. If you want to limit this, put the maximum number of photos you want the camera to send each day in the box. If you want it to send every photo regardless of the number of photos each day, set this value to **0 (zero)**

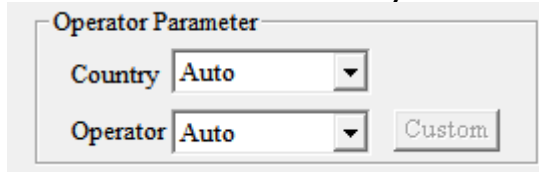
b. Daily Report: This option only sends you the last photo taken each day with a report of all the other activity during the day at the preset time.

c. OFF: choose this option if you do not want the camera to send out the photos taken. This will make the camera perform just like a normal trail cam.

9) **Operator Parameter:**

a. Country: The default set is Auto, or you can choose your Country.

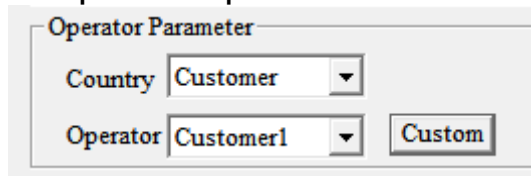
b. Operator: The default set is Auto, if the camera can not find correct carrier, you can choose it manually from Operator.



The dialog box titled "Operator Parameter" contains two dropdown menus. The "Country" dropdown is set to "Auto" and the "Operator" dropdown is also set to "Auto". To the right of the "Operator" dropdown is a button labeled "Custom".

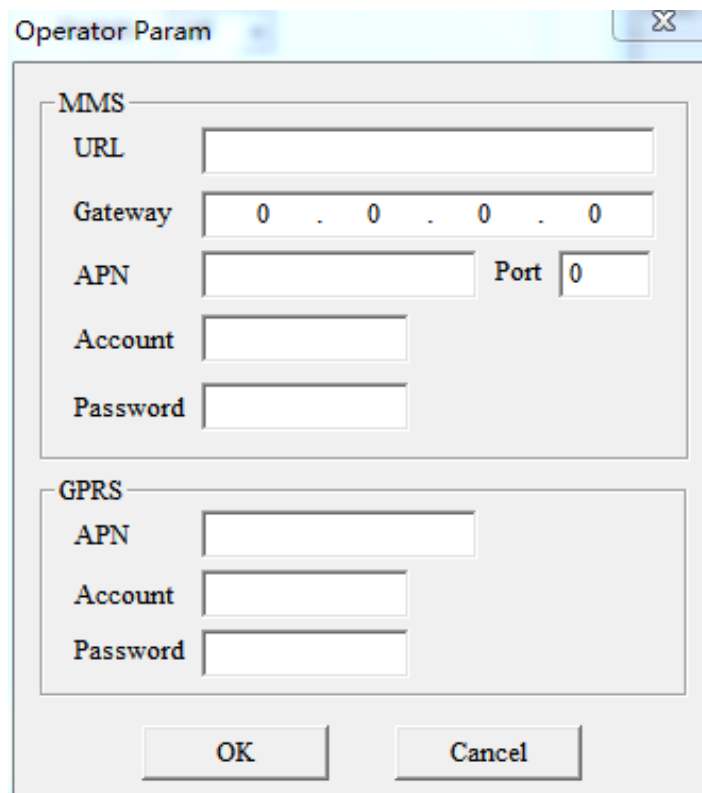
Fig 11

If you can't find your carrier name in the list, please press CUSTOM. Then you can input your operator parameter in the pop-up window Fig13.



The dialog box titled "Operator Parameter" contains two dropdown menus. The "Country" dropdown is set to "Customer" and the "Operator" dropdown is set to "Customer1". To the right of the "Operator" dropdown is a button labeled "Custom".

Fig 12



The "Operator Param" dialog box is divided into two sections: "MMS" and "GPRS". The "MMS" section includes fields for "URL", "Gateway" (IP address 0.0.0.0), "APN", "Port" (0), "Account", and "Password". The "GPRS" section includes fields for "APN", "Account", and "Password". At the bottom of the dialog are "OK" and "Cancel" buttons.

Fig 13

10) **Send to:**

a. Phone: Choose this option if you only want the photos sent to phone numbers

b. Email: Choose this option if you only want the photos sent to chosen e-mail addresses.

Note: For your information security, please click Email Set button to change the default sending email address to your own sending email address. Thanks.

11) **Recipients**

a. Phone: Enter up to 4 different phone numbers.

master phone can remote control camera by sending commands.

b. Email: Enter up to 4 different e-mail addresses in the Email field. The Email option will only be available if you have chosen the **Email** options.

12) SMS Switch: Choose the **ON** option if you want to be able to control the basic functions of your camera by APP from your phone. If you do not want to have wireless control, you can leave the option at **OFF**.

13) Rename: If you want to change the name given to identify the camera, set the drop down box to ON, Enter the new camera name in the box.

14) Max Size: This number indicates the size of the picture being transmitted.

15) Default: If you want to set the camera settings back to the original defaults before changes were made, click this button. You cannot go back once this button is pressed so make sure you want to re-set all the settings before you click this button.

16) Path: The path indicates the location in which the settings are saved. The settings file "PROFILE.BIN" will be generated by UOV SETUP software.

You must save this "PROFILE.BIN" file to the root directory of the SD card for upgrading.

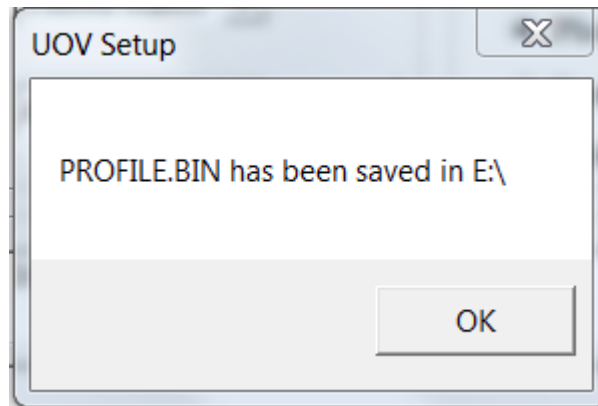


Fig 14

17) Remove the SD card from your computer and insert it into your camera.

18) Slide the **Power switch** to **SETUP** position. Wait for the camera to go through its set up process and find cellular service. Normally it takes 1-3 seconds to see **Update success**.

6.3 Setting up the wireless network

1) Slide power switch to the **SETUP** position. You will see the screen shown below:

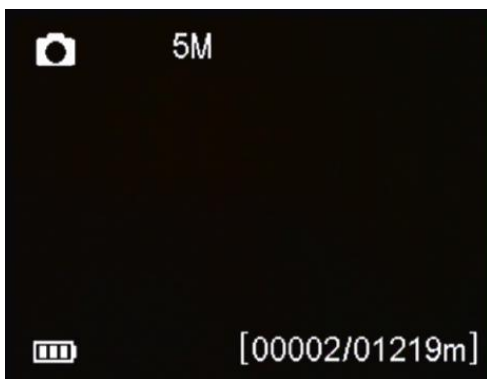


Fig 15



Fig 16



To start, press the **MENU** button once to open the customization menus, press the **▶** to **GSM** option, turn the **Send Mode** to **Instant**. The camera will search for cellular service first. So you will need to be patient for about 10-20 seconds, as the camera does its initial set-up and looks for cellular service.

While finding the network you will see the word **searching**, then **Searching Network** in red on the screen. Once you see the **IMEI number-15-digit number** show up at the top and the service bar indicator show service bars, you are ready to move on.



Fig 17

6.4 Send a test photo

- 1) Press  button to manually take a photo with the camera. You will know that a photo has been taken because the photo counter on the screen will turn to 00001.
- 2) Press  button to enter the Playback mode and then press the **MENU** button. You will see the following screen.

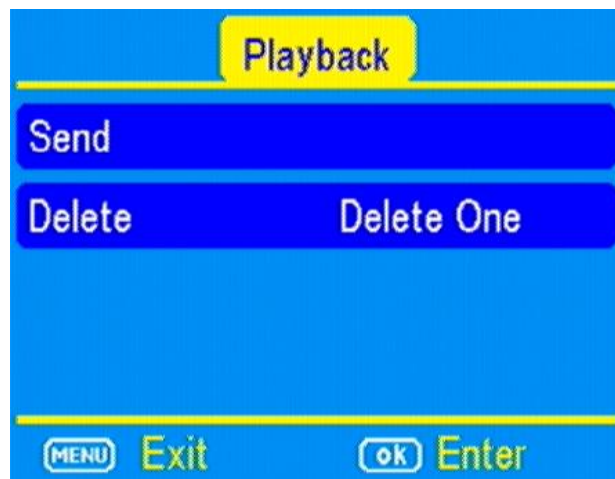


Fig 18

- 3) Press the **▼** to highlight the **SEND** option and press **OK**.
- 4) The LCD screen will start to count up from step 1 to 10. Once you see **Send Successful**.
- 5) Please make sure that the receiving phone opens the data service.

6.5 View or Delete photos on the color display

You can view your photos on the color display when in the field. If you want to do this, make sure the **Power switch** is set to **SETUP**. Press the **Play** button **▶**. You can use the **◀▶** buttons to toggle through the photos.

If you see photos you want to delete, press the **DEL** button. Use the **◀▶** buttons to toggle through YES or NO. Press OK to delete it

Press the Play button **▶** again, you can back to the main screen.

If you want delete all photos one time, press **▶** from main screen, then press **MENU**. Choose Delete item, and use **▶** to select delete all. After delete all the photos, press **▶** again to back to the main screen.

7 Introduction of the Menu bar

7.1 Understanding main screen info

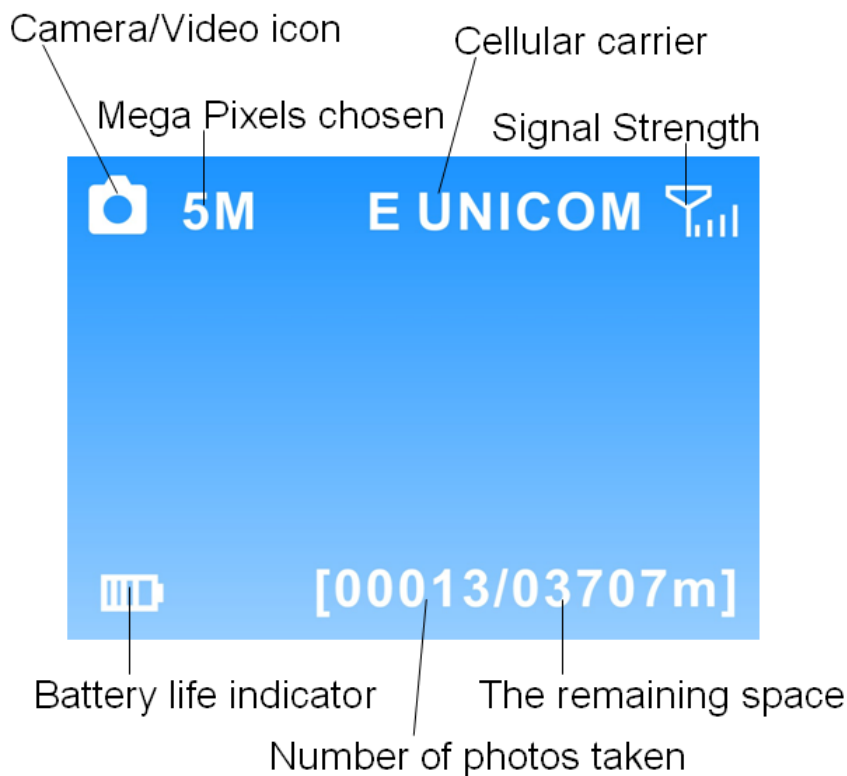


Fig 19

7.2 Customizing the camera settings

Press **LEFT** or **RIGHT** and **UP** or **DOWN** to select the desired options, And then press **OK** to save.

Setting Items		Description
CAM	Camera Mode	Choose Photo, Video. Press the ► button to toggle between Photo or Video until the option you want is highlighted. Press OK .
	Photo Size	Choose the image size, e.g. 5MP, 8MP, 12MP or 3MP. Please keep in mind the higher the MP, the larger the file and the faster your SD card can fill up.
	Photo Burst	Your camera can take a 1, 2 or 3 shot burst every time the PIR is triggered to take a photo. The camera will only send the first photo of the photo burst to your phone or e-mail.
	Video Size	Choose the video size: WVGA/VGA
	Video Length	You can adjust the length of time the camera takes a video from 5-60 seconds. Long videos fill the SD card up quickly.
PIR	Sensitivity	There may be situations where you might feel the camera is not catching animals that are nearby or maybe the camera is triggering too easily. You can adjust the sensitivity of your camera to help with this. Under most conditions, NORMAL option will work the best. In high temperatures, the HIGH setting might help differentiate between the outside temps and the body temps of the animal. In cold conditions, you may find that the LOW option is best as the camera can easily differentiate the outside temps from the body temps of the subject. If you are using the time lapse function, you would choose OFF to turn off the PIR.
	Trigger Interval	Allows you to customize how often the camera can be allowed to take a photo.

		Repeatedly press the ▶ or ◀ to adjust the timing. Options are 0-60 seconds (5 second increments) and 1-60 minutes. NOTE: We suggest you choose 1minute or greater for the MMS to work properly.
	Time Lapse	Time lapse function defines the camera records/captures automatically every preset time period (5seconds~8hours), which doesn't work if it is set to Off. If you have the PIR set to LOW, NORMAL, or HIGH , the camera will also take photos when the PIR is triggered.
	Start-Stop	Start-stop " On " means that the camera works only during that preset time; Start-stop " Off " means that the camera works round the clock.
NET	Send Mode	There are 3 send modes: Instant, Daily report and OFF . (For details, see Page 8)
	Send via	Defines use which way to send your photo, MMS/GPRS
	Send To	Defines to where the MMS to be sent, Phone, Email,BOTH
	Recipients	Press "Enter" to review what you have set to receive the MMS or GPRS pictures.
	SMS Switch	This switch controls whether you can use android APP or send SMS texts to your camera to change the basic settings. If this switch is set to ON , you will be able to communicate with your camera through your phone. (Refer to Page 18 SMS Command Order List)
	Location	Press enter to get the Longitude& Latitude information.(show only in the display screen)
	Download Tool	Please refer to the Chapter 8 for details.
	Set Clock	Enter to set the date and time
	Bluetooth	Turn it on to change settings by App on the cell phone,or sync settings with other device.

SYS	Synchronization	Sync all the settings from host device via Bluetooth to your device.
	Time Stamp	Choose "On" or "Off" to show the time stamp on the picture or not.
	Flash Range	Infrared Flash range: 20 ft./6m and 40 ft./12m.(If most of the subjects are going to be inside 6m/20ft, use the 6m/20ft setting. If you need extended night vision, choose the 12m/40ft option.)
	Password	The default password is 0000 . Choose OFF to stop this function. If you set this option to ON , you will not be able to access your camera without the password. Make sure you write down your password or store it in your phone so you don't lose it. This is a very important security feature.
	Rename	Turn it on to Rename your camera.
	Language	English (Preset). We provide the choice for customer to choose the language, pls contact your distributor for assistance.
	Beep	Customer can choose ON/OFF when operating the cameras.(HD version only)
	Overwrite	ON/OFF, if choose "ON" the camera writes off the previous taken pictures when the SD card is full and continues to record new pictures/videos , thus, the SD-card is recyclable, customer needs not to change SD card frequently.
	Format	Format the SD-card.
	Default Set	Restore all customer settings to default values.
	FW version	For manufacture's use only.

7.3 Defaults settings:

Setting Items		Default
CAM	Camera Mode	Photo
	Photo Size	5M Pixel
	Photo Burst	1 Photo
	Video Size	VGA
	Video Length	5 sec
PIR	Sensitivity	Normal
	Trigger Interval	1 Min
	Time Lapse	Off
	Start-Stop	Off
GSM	Send Mode	Instant
	Send via	MMS
	Send To	Phone
	Recipients	Enter
	SMS Switch	Off
	Location	Enter
	Download Tool	/
SYS	Set Clock	Enter
	Bluetooth	off
	Synchronization	Enter
	Time Stamp	On
	Flash Range	12m/40ft
	Password	Off
	Rename	OFF
	Language	English
	Beep	Off
	Overwrite	Off
	Format	Enter
	Default Set	/
	FW Version	/

8 Setup camera using APP via Bluetooth

Bluetooth module is a new function on UM595-2G camera, it helps customer set up camera on APP via bluetooth connected between camera and cell phone.

1) Switch camera to **Setup** Mode, turn the **Bluetooth ON**, keep the camera under Setup Mode, the screen shows as below;



Fig 20

2) Open APP on the cell phone, choose UnSelected on the top, then APP will start searching your device, when camera ID shows on the APP, click the name then the connection is done;



Fig 21

3) you can change all the settings on the app, and upload the parameters to device. Once the upload is done, update success will shows on the screen.

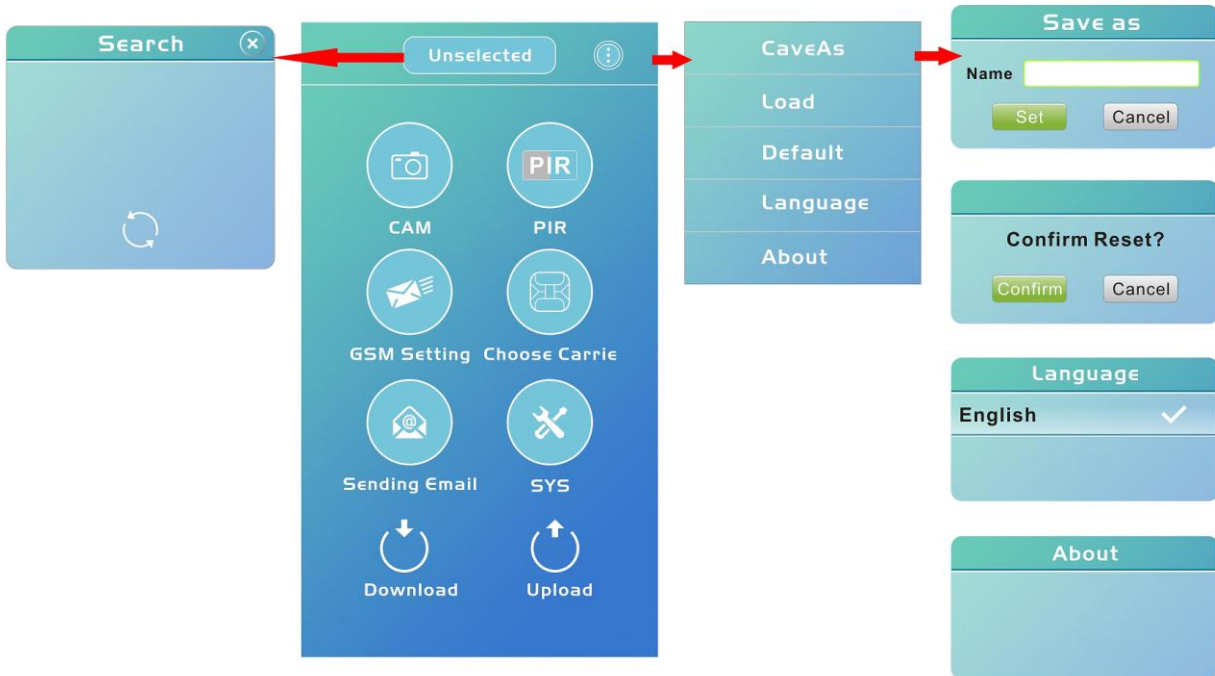


Fig 22

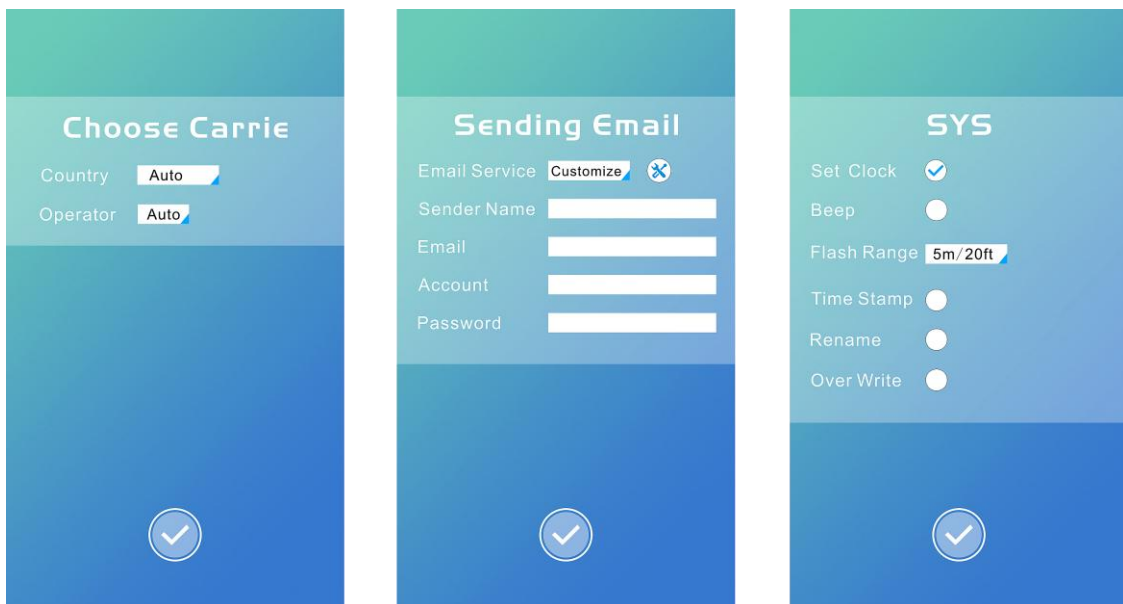


Fig 23

9 Synchronization

1) Synchronization is defined to sync settings from one camera to another camera. One Camera should be set as a host device (CamA), keep this camera under Setup Mode, turn the **Bluetooth On**, after the Bluetooth is opened, the device name and status will shows on screen;

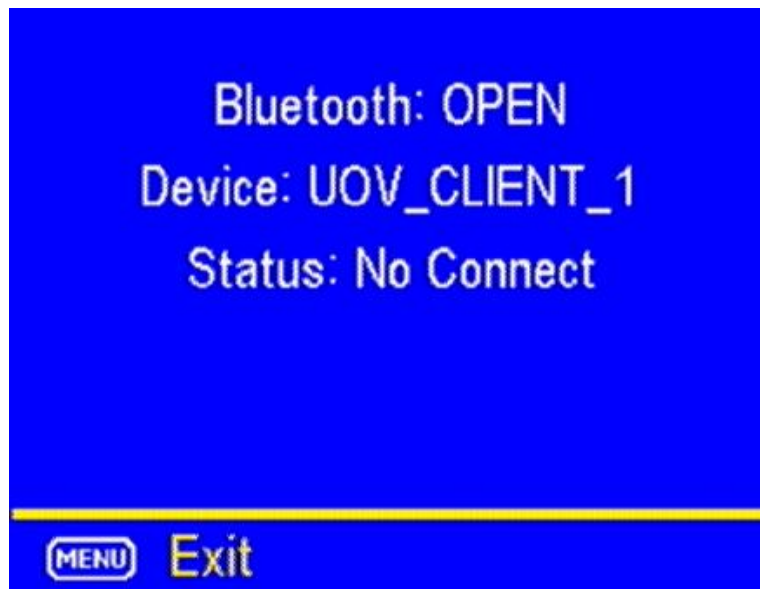


Fig 24

2) choose Synchronization on the other camera(Cam B), press Enter, this camera will search host device automatically, after connected to the host device, it will sync settings in real quick;

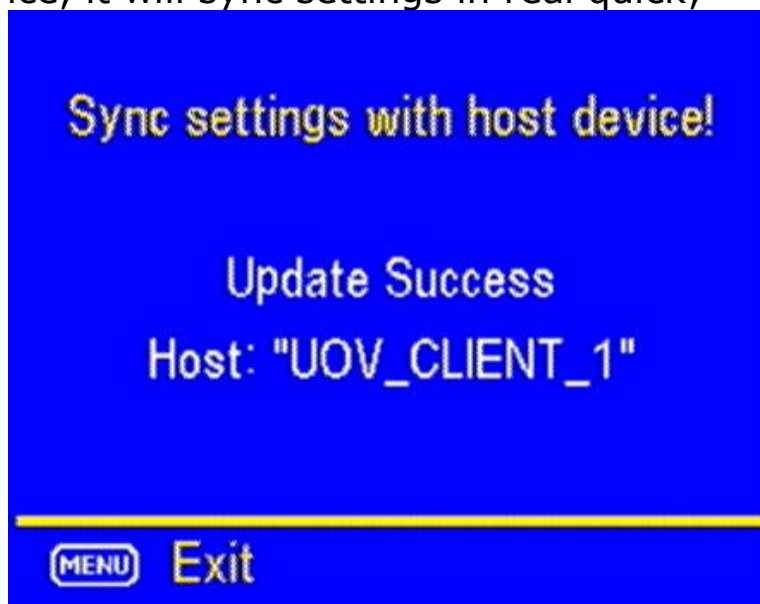


Fig 25

3) Then all the settings on Host device(CamA) can sync to the other device (Cam B), 3)make sure you set the latest parameters. and you can also see the process shows on the host device(Cam A).

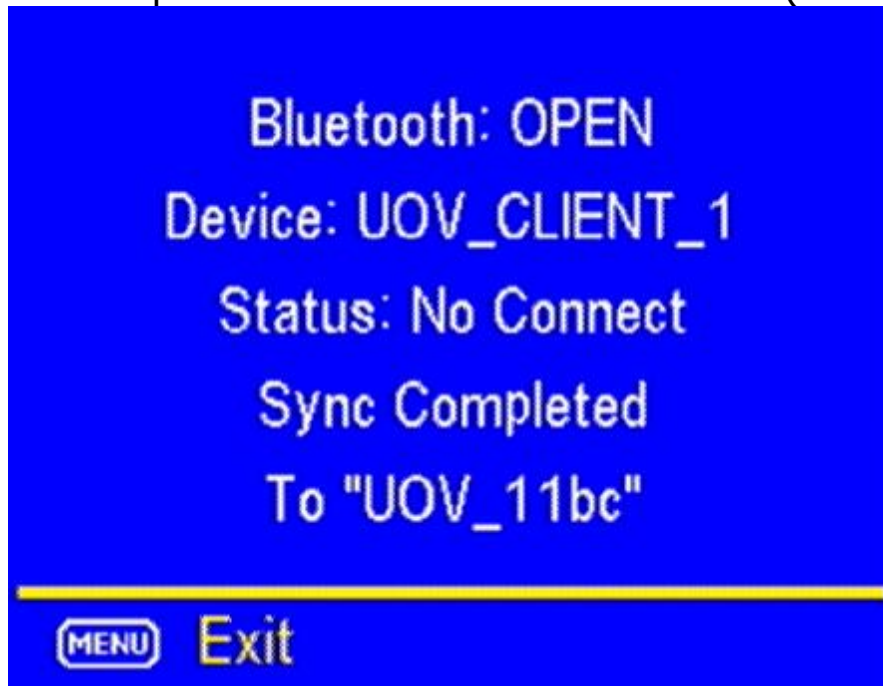


Fig 26

4)More than one camera can be connected to the host device at the same time, but the transfer can only be done one by one each time.

10 Control Camera by APP via SMS

You can control many of the basic functions of your camera from your cell phone by android/IOS APP or text message. You can control the following functions on your camera via android/IOS APP.

(IMPORTANT NOTE: the **SMS switch** MUST be set to **ON** in the GSM **set-up** for the SMS function.)

The number who has control of this function (command phone number) is the one who is in the first position in the phone number list. This number can delete/add the subordinates of phone numbers 2, 3 and 4.

Please search “UOVision” or “UOVision CamCtrl” in Google play and install the APK file to your smart phone.

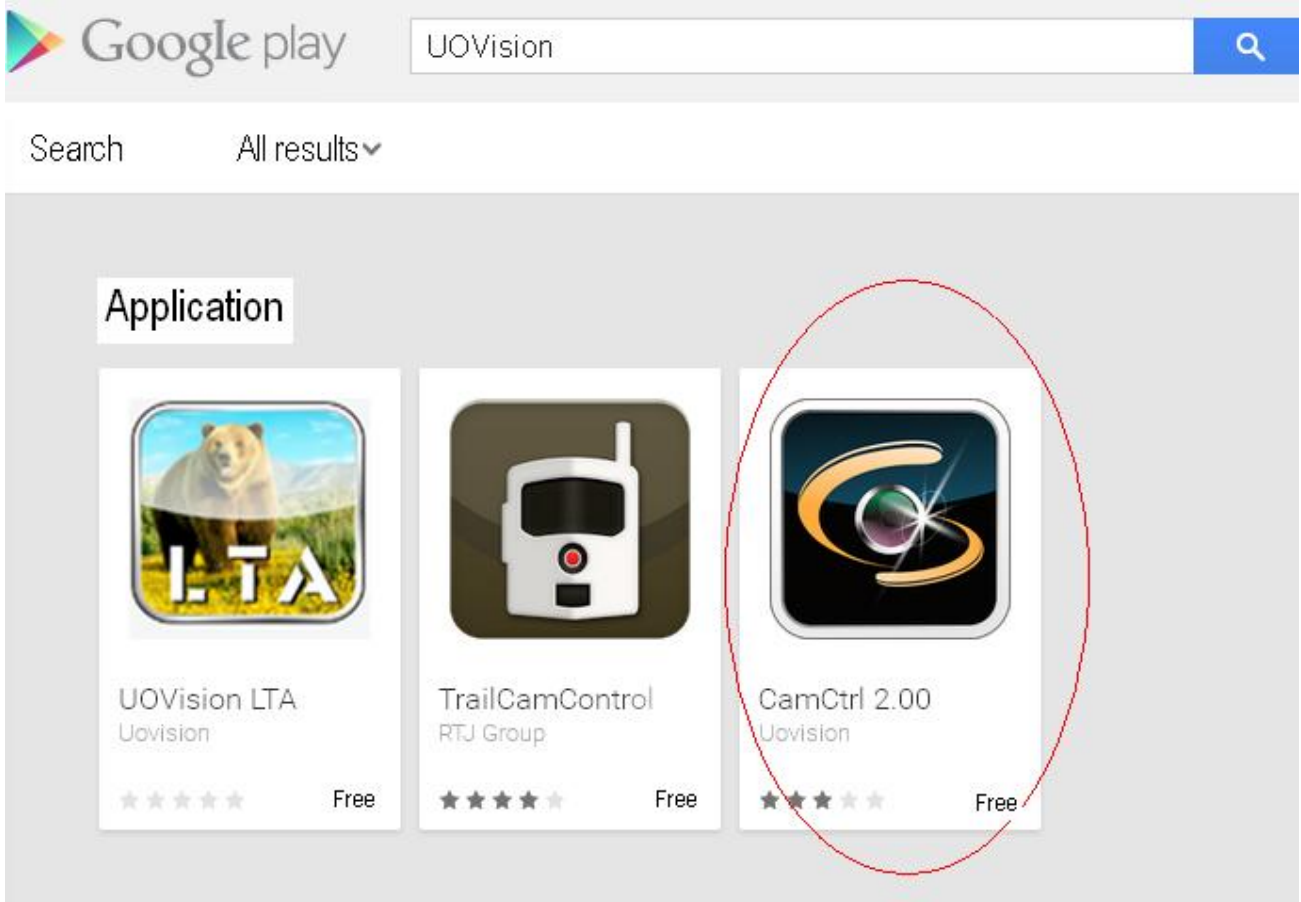


Fig 27

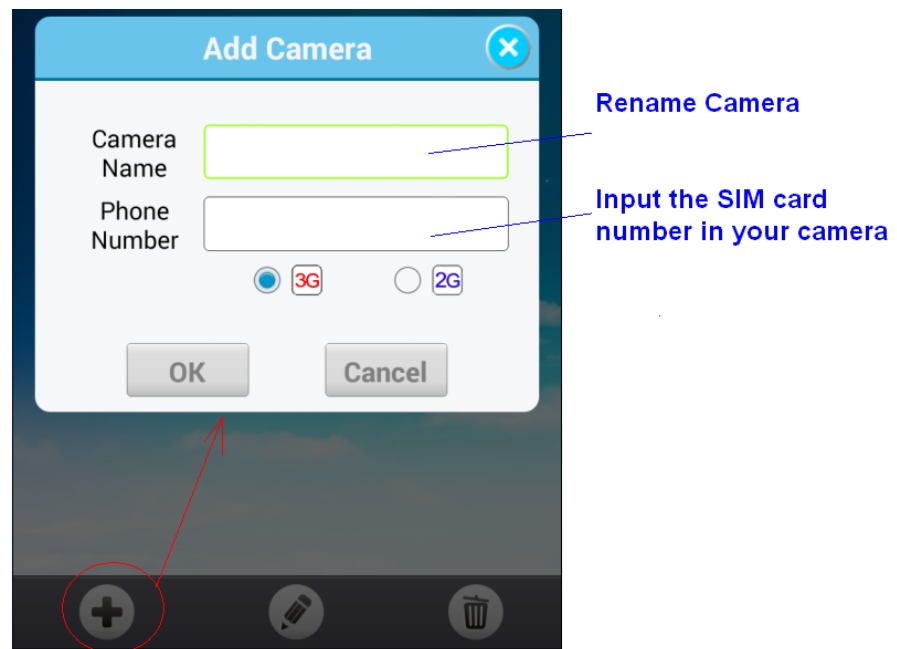


Fig 28

There are 2 main panels as below. Slide the phone screen to change between the panels.

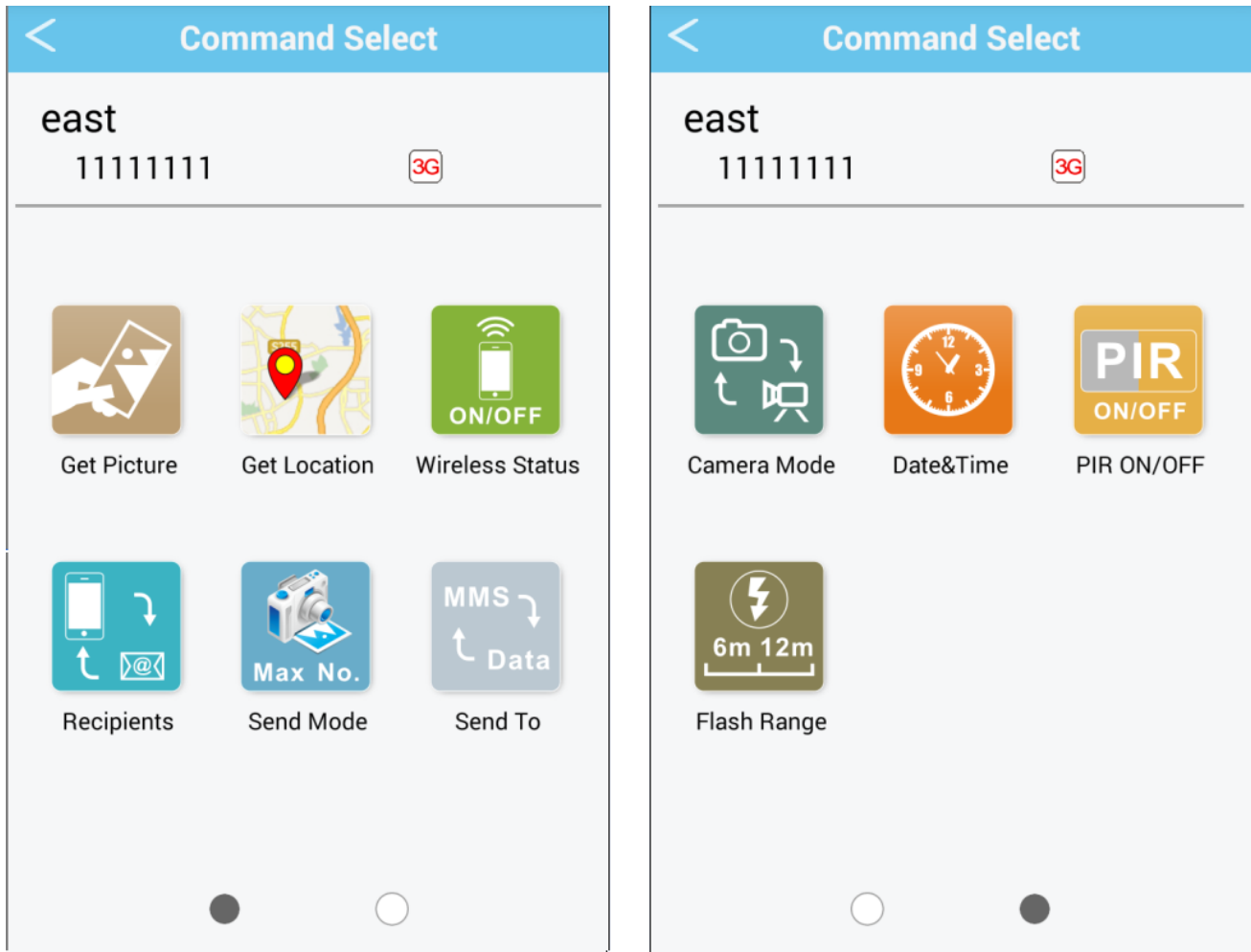


Fig 29

Note: If you set **Wireless Status** to **OFF**, you will not receive photos or Daily reports to your phone or e-mail. You also can't get any response of other SMS commands. Just **Wireless ON command** can be responded when the Wireless Status is **Off**.

If you can't use **CamCtrl APP** to control your camera, please don't worry. You also can remote control your camera via text message. For example, you can edit "#500#" to retrieve a picture. For more commands, please see the below table.

SMS Command Order List

ITEM	SMS Command Order
Add Phone Number	#140#1#phone number# (Master ONLY)
Delete Phone Number	#140#0#phone number# (Master ONLY)
Add Email Address	#141#1#email address# (Master ONLY)
Delete Email Address	#141#0#email address# (Master ONLY)
Set Photo Mode	#310#P#
Set Video Mode	#310#V#
Acquire Pictures	<p style="text-align: center;">#500#</p> <p>(If you send #500# to acquire picture, the camera will capture a single picture immediately and send it to the email addresses and/or phone numbers listed in the GSM settings.)</p>
Get Location	<p style="text-align: center;">#510#</p> <p>(Your camera is equipped with a GPS locator. If your camera is lost or stolen, text #510# and it will send you back it's longitude and latitude coordinates of the location of the camera which you can then provide to the authorities for recovery. You want to be sure you use your password protection option and keep your SMS switch set to ON. If the SMS switch is set to OFF, this function will not work.)</p>
Wireless Off	<p style="text-align: center;">#200#Off#</p> <p>(If you set wireless to OFF, you will not receive photos or Daily reports to your phone or e-mail. You also can't get any response of other SMS commands except wireless on command. Your camera will always still record all the events on the SD card.)</p>
Wireless On	<p style="text-align: center;">#200#On#</p> <p>(If you set wireless to ON, you will receive photos or Daily reports to your phone or e-mail again.)</p>

11 View or Delete photos on the color display

You can view your photos on the color display when in the field. If you want to do this, make sure the **Power switch** is set to **SETUP**. Press the **Play** button **▶**. You can use the **◀▶** buttons to toggle through the photos.

If you see photos you want to delete, press the **DEL** button. Use the **◀▶** buttons to toggle through YES or NO. Press OK to delete it

Press the Play button **▶** again, you can back to the main screen.

If you want delete all photos one time, press **▶** from main screen, then press **MENU**. Choose Delete item, and use **▶** to select delete all. After delete all the photos, press **▶** again to back to the main screen.

12 Trouble Shooting

COMMON ERROR MESSAGES:

“SEND FAIL”

“NETWORK BUSY”

Reasons for error:

- 1) The service in your area is not sufficient to run the camera.
- 2) There is an error when setting up the SIM card or it's locked.

Suggestions to remedy:

- 1) Re-do the **GSMSETUP** to make 100% sure there aren't any mistakes, check to be sure the numbers and e-mail addresses are correct.
- 2) Contact your network provider and make sure your SIM card is a **Text Feature Package** only and is **UNLOCKED**.
- 3) If it's a cellular service issue you may need to purchase a booster antenna to help boost the signal. These can be very effective in boosting the signal to your camera in a poor signal area.

“Network Busy:”

Reasons for error:

- 1) There is a problem with the phone number or email addresses.
- 2) There is not enough money on the SIM card plan.

Suggestions to remedy:

- 1) Re-do the UOV setup. Make sure there are no mistakes.
- 2) Sometimes you need to go back to just one phone number or e-mail address at a time to find where the error is. Test with just one and if it works, then add more and test.
- 3) Call in and re-up your text plan with more texts.

Cannot access the SETUP menu:

Reasons for issue:

- 1) This only happens if you don't have a SD card in the card slot or if the SD card is corrupt.
- 2) Batteries are too low

Suggestions to remedy

- 1) Install a SD card or Install a new SD card
- 2) Replace the batteries.

13 Tricks and tips on field setup

For best results, mount the camera approximately 1.3m/4ft off the ground facing straight forward as level as possible.

To enhance the flash, we recommend positioning the camera in an area with a backdrop to reflect the maximum amount of light. For instance, place the camera 7m-10m/20ft-30ft from a field edge facing the woods. For the inside of timber, positioning the camera facing a thicket approximately 7m-10m/20ft-30ft away.

Try to set the camera up so it's not facing directly into the sun either in the morning or the evening when game movement is at its peak.

Appendix I : Technical Specifications

Picture Resolution	12MP, 8MP (Interpolated), Real 5MP, 3MP
Lens	F/NO=3.0 FOV(Field of View)=52°
Frequency Bands	Quad-Band GSM/GPRS/EDGE 850/900/ 1800/1900MHz
IR-Flash	6m, 12m
Display Screen	2.0" LCD
Memory Card	Up to 32GB
Video Resolution	VGA,QVGA
PIR Sensor	Multi Zone
PIR Sensitivity	Adjustable (High/Normal/Low)
Trigger Time	0.65s
Weight	0.43kg(without battery)
Operation/Storage Tem.	-20 - +60°C / -30 - +70°C
Trigger Interval	0s – 60 min.
Time lapse	5-55 second (in 5 second increments); 1-59 minutes(in 1 minute increments); 1-8 hours(in 1 hour increments);
Photo Burst	1-3
Video Length	5-60s
Power Supply	4×AA, 8×AA or 12AA
Stand-by Current	SMS off , < 0.25 mA (<6mAh/Day)
Power Consumption	600 videos (interval=5min,video length=10s) ; >800 MMS(use 12*AA batteries)
Low Battery Alert	LED Indicator; SMS alert
Mounting	Rope/Belt/Python lock
Dimensions	117 x147 x74 mm
Operation Humidity	5% - 90%
Security authentication	FCC, CE, RoHS
Bluetooth range	10m

Appendix II : Parts List

Part Name	Quantity
Digital Camera	One
Belt	One
User Manual	One
Antenna	One

Declaration of Conformity to Directive 1999/5/EC

CE Caution:

Hereby, the manufacturer declares that this camera is in compliance with the essential requirements and other relevant provisions of Directive 1999/5/EC. Pls ask for your distributor for a copy of the **Declaration of Conformity to Directive 1999/5/EC**.



Customer Name:	
Contact Tel:	
Date of Purchase:	
Series No:	
Fault Description:	
Retailer:	

The camera manufacturer provides 24 months of warranty service for this product against manufacturing defects or malfunctions. If your camera fails to function under normal use within 2 years, the camera manufacturer will repair or replace the camera at no charge. The **purchase receipt must be included from an authorized retailer to validate the warranty.** Improper use of the camera resulting in damage is not covered by this warranty.

The camera manufacturer can provide repair service, after the warranty expiration. The customer will be responsible for any charges on parts, labor and shipping costs. Please contact the manufacturer for more details.

Please contact the area dealer for more details.